



Archiving on an 1100 Drive Using PC Term

NOTE: Archiving is not available on early 1100 drives, and also with any of the newer basic 1100 drives that have a non-numeric keypad.

1.0 PC Connection Set Up

NOTE: Sections 1.0 to 3.0 pertain to establishing communication. If the drive is already communicating you may proceed to [Section 4.0 Archiving](#)

The Series 1100 drive must be set up to talk to a PC with PC TERM. PC TERM can be downloaded from our web site at <http://www.unicous.com/downloads>

To connect to the Unico drive, you would need a cable kit. Unico has available a USB to Serial Kit that allows connection to a PC via a USB port. The kit is isolated and uses a shielded cable designed for the noise ridden drive environment.

The 714-070 Basic Kit has all that is needed to communicate with the following Unico DSP module types:

1100 Drive X10, X27, CX10, AND CX15
2400 Drive E or S 80, E or S 27, E or S 28

For some other DSP module types, the following adaptor cables would need to be ordered in addition to the 714-070 basic kit:

- (1) 203-291 Adaptor cable would be needed for a Unico 40M DSP Module
- (1) 203-296 Adaptor cable would be needed for an 1100 Drive with X16, X20, or X40 type DSP Modules.

If you need to order these parts, please contact the [Unico Parts Department](#).

This USB kit requires the installation of driver software. This comes with the kit, or can be downloaded from our web site at: <http://www.unicous.com/downloads>

2.0 Drive Communication Set Up

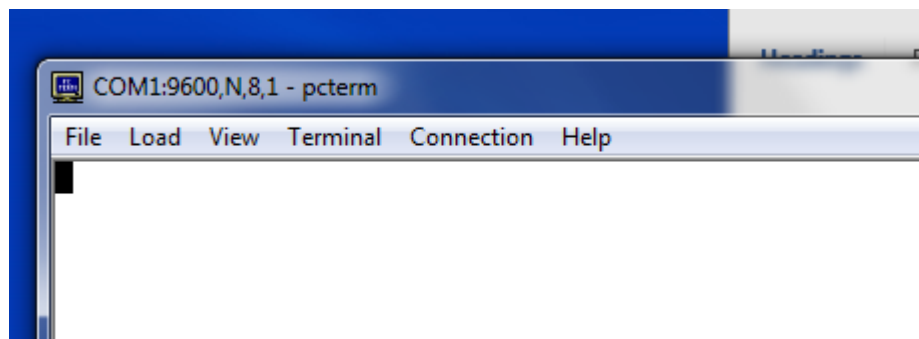
There are several set ups in the drive that need to be set to allow communication. In most drive programs, these values are found in the COMMS menu, which is an option under SET UP / DICTIONARY. In most cases one will connect to the CONSOLE PORT,

which is the port found in the lower left hand corner of most DSP modules. It is available as RS232 or RS422. If using the Unico #714-070 or 712-300 you would use the RS422 connection.

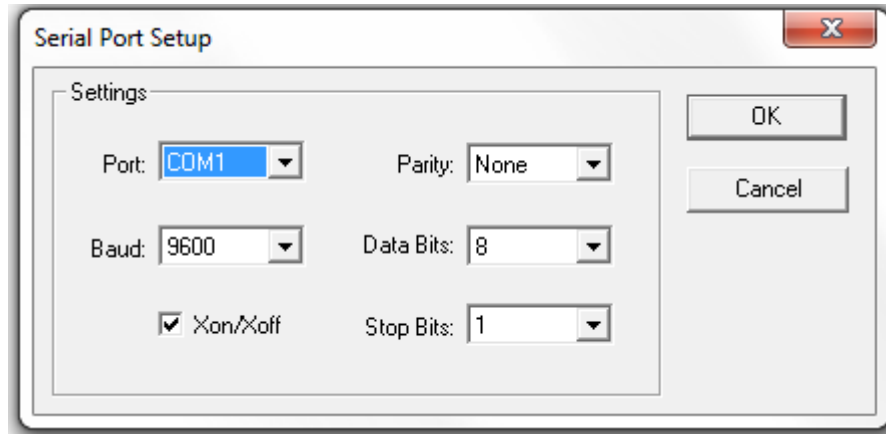
console protocol	DRIVE MENU
console term type	RCA
console term size	24 x 40
console baud rate	(set to value set on archive, and set same in PC TERM)
console parity	NONE
console stop bits	1
console address	(don't care when Protocol is DRIVE MENU)
console checksum	BCC
console rtu gap	0
console units	(don't care)
console pos units	(don't care)

3.0 PC TERM Set Up

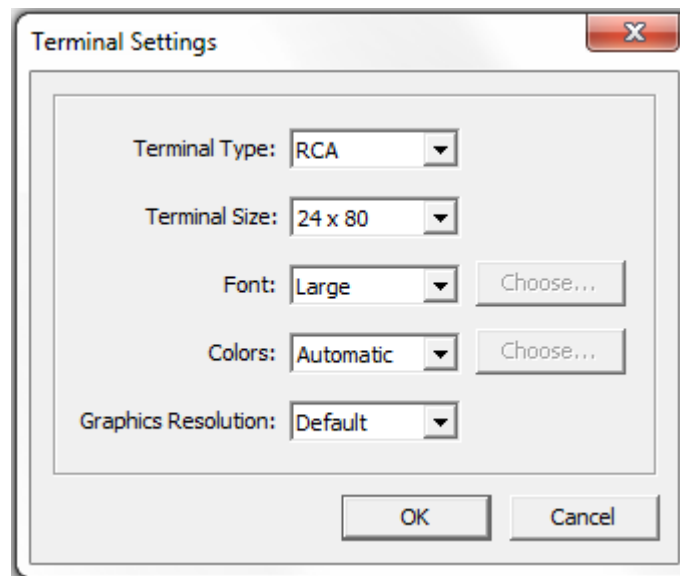
Once PC Term is loaded, you would need to check and adjust some settings in the PC TERM Tool Bar.



1. Under CONNECTION, the Port setting would need to be set to match the serial or USB port that your PC assigned. If in doubt what that is, the Device Manager should help with that.
2. Also under CONNECTION, the baud rate would need to be set to match what is set at the Unico drive, which also should be what the CONSOLE BAUD RATE is on the 1100 archive.



3. The TERMINAL pull down should also be checked. The TERMINAL TYPE should be to match the system set up, which in this case was set to RCA.



The PC should be powered up before powering up the 1100 drive so it is ready to receive information once the drive sends it.

Cycle power. The drive start screen should come up. Once communications are established you can proceed with the uploading and downloading functions.

4.0 Archiving

To Upload Archive Set Up Values

Note: “Uploading” copies set ups from the drive into a file.

1. Verify that the baud rate the drive is communicating with matches the baud rate on the archive. If it is different, both the drive and PC TERM baud rates should change to match the archive.
2. On the PC Term drive display, go to the ARCHIVE MENU under SET UP menu.
3. Select UPLOAD.
4. If requested, select the UNITS as directed.
5. Select the FILE pull down on PC Term and select CAPTURE TEXT. Choose a name for this file when prompted and select SAVE. Press the RETURN key which should start the screen scrolling with parameters as they are being stored to that file.
6. Select CAPTURE TEXT again which should uncheck it. The parameters should be saved. You can open this simple text file and verify the parameters are present. However, do not type anything while viewing this file or the archive will not load!

To Download Set Up Values

Note: “Downloading” is to load values from an existing test file previously created into a drive.

1. Select SET UP, then “ARCHIVE and then DOWNLOAD from the PC Term drive display.
2. Select “ARCHIVE and then select DOWNLOAD from the PC Term drive display.
3. Select the LOAD pull down on PC Term. Then select “ASCII File Send” or alt l.
4. Type in the file name of where the values are coming from, and click on open. A progress bar should appear showing the transfer.
5. Once the download is completed, make note of any errors. Type the ESCAPE key as requested.
6. The drive should restart. You may need to reselect the baud rate in PC Term since the download may have changed that.
7. Verify a few parameters to make sure that the download was successful.

