

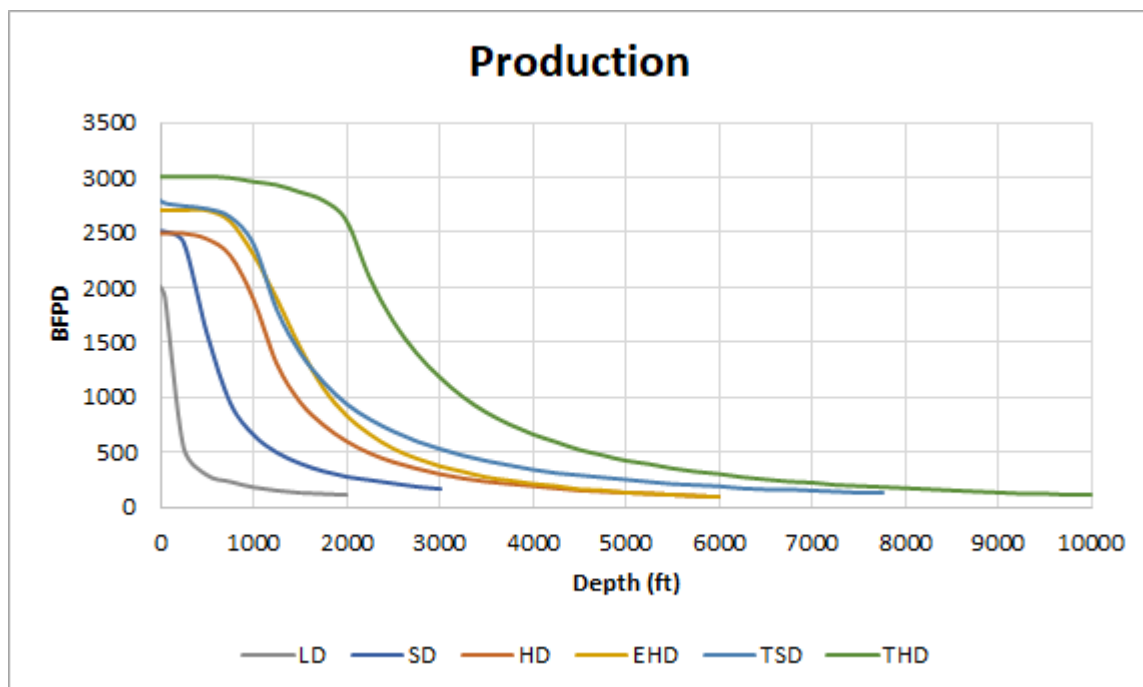
LRP™ Rod Lift

Technical Specifications



Introduction

The Unico LRP® rod pumping mechanism provides a range stroke lengths and lift capacities providing a wide range of production capabilities. The chart below provides an estimate of the maximum production by model and depth for the LRP product line.



Listed is a abriviated list of characteristics and capabilities for the available LRP models.

Note: The listed oil capacities are approximate. Heights and weights are based on standard equipment. Variations based on customer request, including options such as rod rotators, will result in different values. Please contact the factory for information on specific models and options.

Technical Specifications

Light Duty (LD) Model

The smallest member of the LRP family specifically designed for low volume CBM wells.

Rated Lift Capacity	4,800 lbs		
Rated Gearbox Torque Capacity	8,500 in-lbs		
Rated stroke (inches)	12	24	36
Total stroke (inches)	17.2	29.2	41.2
LRP weight without oil (lbs)	511	534	566
Retracted unit height (inches)	39	51	63
Over all height above stand (inches)	75	99	123
Gearbox oil capacity (gal)	2.2	2.2	2.2
Base oil capacity (gal)	1.5	1.9	2.4

Standard Duty (SD) Model

The original member of the LRP family specifically designed for CBM wells and low-flow oil wells.

Rated Lift Capacity	12,000 lbs			
Rated Gearbox Torque Capacity	23,900 in-lbs			
Rated stroke (inches)	20	32	44	56
Total stroke (inches)	25.8	38.3	50.1	61.9
LRP weight without oil (lbs)	806	1197	1232	1272
Retracted unit height (inches)	47	61	72	87
Over all height above stand (inches)	95	120	143	166
Gearbox oil capacity (gal)	2.2	2.2	2.2	2.2
Base oil capacity (gal)	1.25	2.0	2.75	3.5

Heavy Duty (HD) Model

The first member of the LRP family specifically designed for oil wells.

Rated Lift Capacity	19,000 lbs		
Rated Gearbox Torque Capacity	38,100 in-lbs		
Rated stroke (inches)	32	44	56
Total stroke (inches)	37.9	49.7	61.5
LRP weight without oil (lbs)	1823	1923	2023
Retracted unit height (inches)	63	83	96
Over all height above stand (inches)	144	186	197
Gearbox oil capacity (gal)	3.9	3.9	3.9
Base oil capacity (gal)	4.5	6.0	7.75

Extended Heavy Duty (EHD) Model

An extended version of the HD model.

Rated Lift Capacity	19,000 lbs	
Rated Gearbox Torque Capacity	38,100 in-lbs	
Rated stroke (inches)	64	86
Total stroke (inches)	68.7	91
LRP weight without oil (lbs)	2325	2735
Retracted unit height (inches)	103.0	135.8
Over all height above stand (inches)	214.0	267.7
Gearbox oil capacity (gal)	3.9	3.9
Base oil capacity (gal)	14.5	14.25

Tandem Standard Duty (TSD) Model

A version of the SD model with two gear-motors, doubling the torque and lift capacity.

Rated Lift Capacity	23,900 lbs			
Rated Gearbox Torque Capacity	47,800 in-lbs			
Rated stroke (inches)	86	100	120	144
Total stroke (inches)	91.5	105.5	125.5	149.5
LRP weight without oil (lbs)	3756	3756	3756	3756
Retracted unit height (inches)	143	158	178	202
Over all height above stand (inches)	255.7	269.7	289.7	313.7
Gearbox oil capacity (gal)	7.8	7.8	7.8	7.8
Base oil capacity (gal)	5	6	7.5	9

Tandem Heavy Duty (THD) Model

An version of the HD model with two gear-motors, doubling the torque and lift capacity.

Rated Lift Capacity	38,100 lbs			
Rated Gearbox Torque Capacity	76,200 in-lbs			
Rated stroke (inches)	86	100	120	144
Total stroke (inches)	91.5	105.5	125.5	149.5
LRP weight without oil (lbs)	3756	3756	3756	3756
Retracted unit height (inches)	143	158	178	202
Over all height above stand (inches)	255.7	269.7	289.7	313.7
Gearbox oil capacity (gal)	7.8	7.8	7.8	7.8
Base oil capacity (gal)	5	6	7.5	9

UNICO—Worldwide



Corporate Headquarters

Unico, LLC.
3725 Nicholson Rd.
P. O. Box 0505
Franksville, WI
53126-0505

262.886.5678
262.504.7396 f a x

www.unicous.com



All trade designations are provided without reference to the rights of their respective owners.

Specifications subject to change without notice.

Unico is a leading global innovator of motion-control solutions for industry. Founded in 1967, the company develops, manufactures, and services variable-speed drives, application-engineered drive products, integrated drive systems, and ancillary products that improve operations by increasing productivity, safety, and equipment life while lowering energy and maintenance costs.