



Unico RPC

Rod Pump Controller

Enhanced pump-off control of sucker-rod pumping systems
utilizing both surface and downhole calculations



WARNING
SHOCK HAZARD
MOTOR CONTACT
VOLTAGE PRESENT
BYPASS SWITCH IS
ISOLATE AT SOURCE
BEFORE OPENING

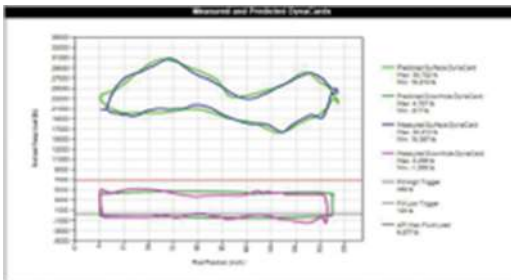
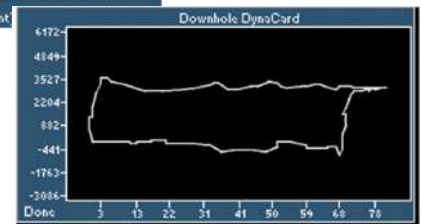
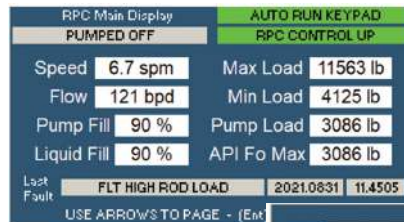
Optimum ON/OFF control

Unico RPC provides ON/OFF fixed speed control or variable speed for rod pumped wells by utilizing patented algorithms and system modeling to optimize run times.

The RPC can be used to maximize the benefits of most rod pumped wells including electric and hydraulic driven pumping units.

Easy access to information

Create shortcuts for favorite views, graphs for troubleshooting, guides for easy setup and diagnostics

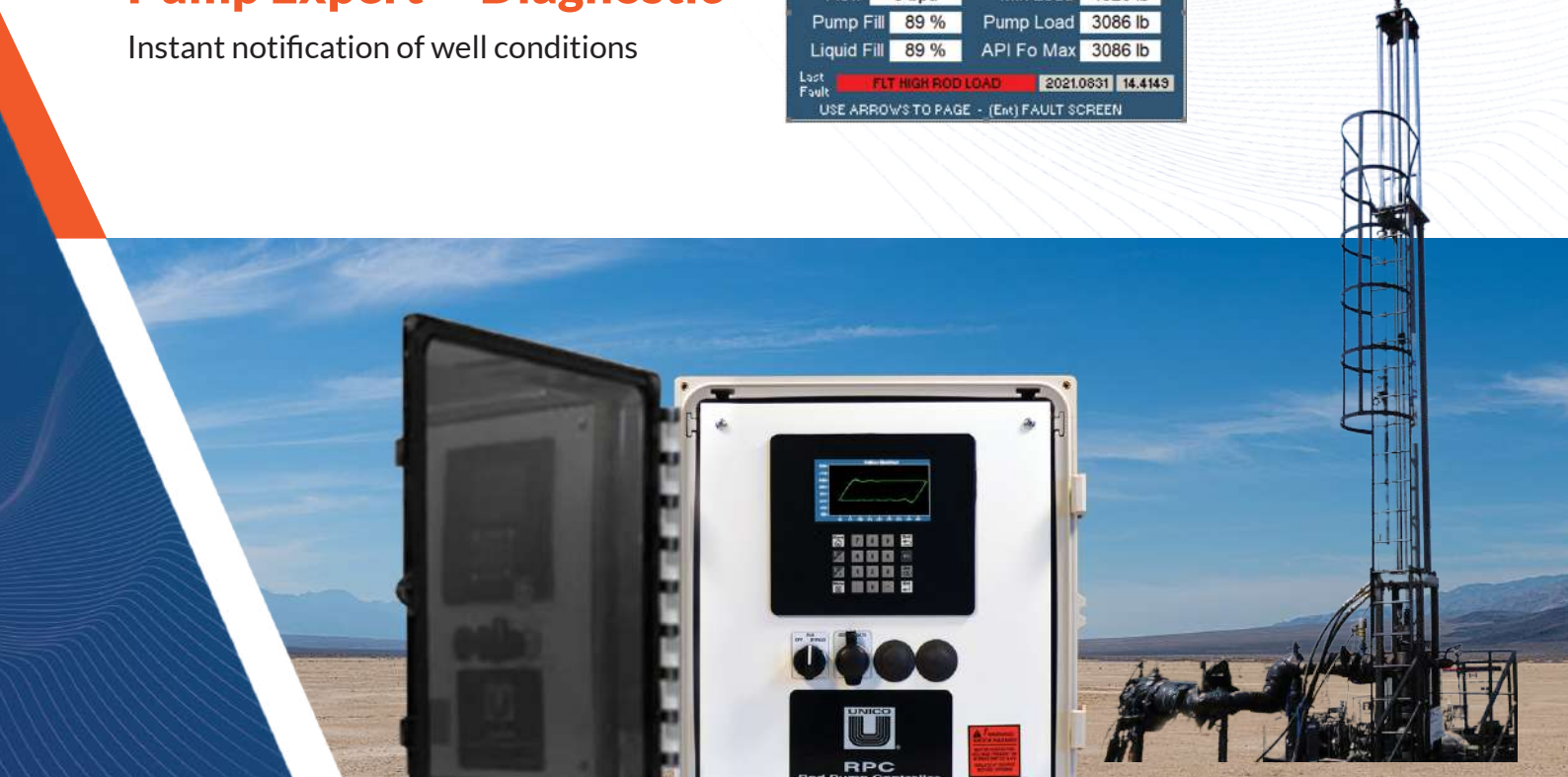
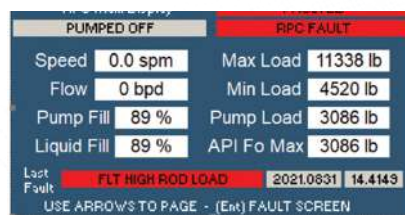


Pumping system simulator

Validate current design and installation settings

Pump Expert™ Diagnostic

Instant notification of well conditions



Why Unico RPC is the Leader in Optimization Automation

Patented algorithms in the controller maximize production, protect the pumping system and improve MTBF

Production Optimization

- Pump Fill Control
- Real Time Surface Dynacards
- Real Time Downhole Dynacards
- Diluent control
- Pumping System Modeling
- DH Friction Calculation
- Daily Production
- FOP/PIP Calculation

Energy Efficiency

- Balance assistant
- Calendar Run times
- Auto determine Dwell Times
- Auto Restart

Equipment Protection

- Rod Load Limiter
- Pump Diagnostics
- Oil & Belt service reminders
- Gearbox Torque Limiter
- Belt Slip Detection
- Gearbox service reminders

Advanced Features

- UEDIT® - built in soft PLC capability
- Mobile Device Connectivity
- Well Analytics
- Pump/Rod Velocities/Position
- Hydraulic Pumping unit Capable
- Pump Diagnostics
- Pump Expert™
- Fault / Event History
- Technical Support/Training
- Remote Connectivity
- Engine Control Option
- Solar Powered Option



Unico RPC Rod Pump Controller

Sophisticated Start / Stop Control

Unico RPC provides economical pump-off control of all sucker rod pumping systems. Sophisticated modeling and control software, along with polished rod load cell and inclinometer, measure and computes downhole conditions to optimize pump start/stop via a separate motor controller.

Comprehensive monitoring and reporting capabilities provide real-time surface and downhole dynamometer plots, daily gauging, fault and event logging and a user-configurable data sampler through an easy-to-use interface

General Specifications

- Input Voltage: 12vdc, 24vdc, 110-220vac
- Enclosure: NEMA 4 (IP55)
- Listing: UL
- Operating Temp: -40° to +122°F
(-40° to +50°C)



www.unicous.com

in f @ t x v unicollc



Scan to Visit Our Website

UNITED STATES

CORPORATE HEADQUARTERS
3725 Nicholson Rd. P. O. Box 0505
Franksville, WI 53126-0505
(262) 886-5678

UNITED KINGDOM

Unico (UK) Ltd.
Garamonde Drive Wymbush,
Milton Keynes MK8 8LF
+44.1908.260000

GERMANY

Unico Deutschland GmbH
Dortmunder Straße 7
D-57234 Wilnsdorf
+49.2739.303.0



All trade designations are supplied without reference to the rights of their respective owners.

Specifications subject to change without notice.

1100.21(025)

5/23

COLOMBIA

Centro Empresarial Metropolitano
KM. 3.4, Calle 80-Via Siberia-Cota.
Modulo 1, Bodega 6
+(57-1)-7469550/7469569
+57 -3173650663

AUSTRALIA

(Manufacturing, Engineering,
Sales And Service)
Unit 3, 553 Boundary Road
Darra, Queensland 4076
+61.7.3713.7830
+61(0)439.700.548

CANADA

1515 Matheson Blvd, East
Unit # B5
Mississauga, Ontario
L4W 2P5
Canada
(905) 602-4677